



SIMUVACTION 2022
AI and Health Disparities on
a Global Stage

 **FRANCE**
ATLANTA

THE PROJECT

WWW.SIMUVACTION.COM

[EVENTBRITE: TINYURL.COM/5BX3WXS](https://EVENTBRITE.COM/TINYURL.COM/5BX3WXS)

A replication of a “Global Partnership on AI” meeting where students coming from eleven Academic Institutions (Emory, Georgia Tech, Spelman College, the Morehouse School of Medicine, the University of Montreal, EUniWELL through six Universities including Nantes Université (FRANCE), University of Florence (ITALY), University of Birmingham (United KINGDOM), Koln University (GERMANY), Semmelweis University (HUNGARY), Leiden University (NETHERLANDS)) will play the role of National Delegations, Stakeholders and Journalists and think collectively about one of the most challenging AI quandaries: How can we ensure that AI, designed to help address health inequities does not, in fact, increase such disparities?

Beyond the class, “think globally, act locally!”

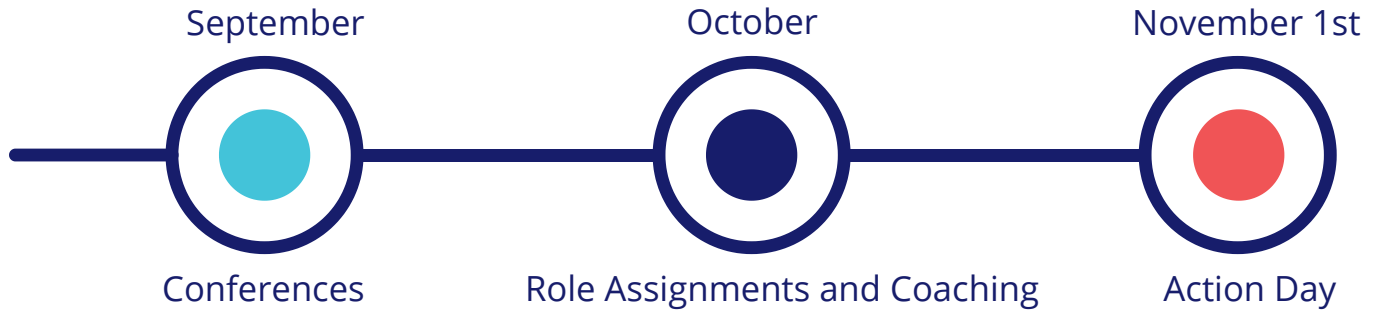
Beyond the exercise, this Simuvaction on AI is also a way to strengthen connections between academic, economic, institutional, and NGOs. Conferences by experts of the field, contacts with the Embassy of the represented delegation, coaching with real businesses and NGOs (for journalist and lobbyist teams), will be integral parts of the course and therefore, an opportunity for the colleges and communities to cross their interests, develop their networks and foresee further collaboration.



Creating an ecosystem through simulation.

This exercise is organized under the auspices of France-Atlanta, with the Office of Science and Technology of the Embassy of France in the US and Georgia Institute of Technology.

TIMELINE



STAGE 1-CONFERENCES

PRESENTERS

Carl Wocke, CEO and Mark Keith, Business Development Manager
Merlynn-AI Technologies

Gari Clifford, Chair, BioInformatics
Emory University

Louisa Stuwe, French Ministerial Delegation for Digital Health

Baia Lasky
American Red Cross

Pauline Palma, Post-Doc Fellow on AI & Ethics
UNESCO

STAGE 2-COACHING

TEAMS

Trio LEAD CHAIR
BRAZIL
CANADA-QUEBEC
FRANCE
GERMANY

COACHES

Anne-Elisabeth Courier
Eugene V. Garcia, Deputy Consul of Brazil, San Francisco
David Weiner, Delegate of Quebec to the Southern US, ATL
Rami Abi-Akl, Consulate General of France, ATL
Meike Buchte, Advisor for Public Affairs, Consulate General
of Germany, ATL
Christoph Rasche, University of Postdam

STAGE 2-COACHING CONT.

TEAMS

MEXIQUE
UNITED KINGDOM
USA
STAKEHOLDER-Social
STAKEHOLDER-Chair of Plenary
Group
STAKEHOLDER-Industrial
STAKEHOLDER-Science
STAKEHOLDER-Civil Society
STAKEHOLDER-International Org.
JOURNALISTS

COACHES

Patricia Cruz Fierro, Deputy Consul of Mexico, ATL
Anne-Elisabeth Courrier
Alain Lafourcade (Private)
Stefano Folli, Executive Vice-President, Philips
Stefano Folli, Executive Vice-President, Philips

Mark Keith, Business Development Manager, Merlynn-AI Tech.
Mark Keith, Business Development Manager, Merlynn-AI Tech.
Yalchin Mammadov, Global Skin (private)
Pauline Palma, UNESCO
E. Colton, Journalist, Diplomat, UNITAR, Fellow in Residence at
Warren Wilson College

NEGOTIATIONS TRAINING

Philippe Perchoc
Anne-Elisabeth Courrier
Ben Garrett

STAGE 3-IN ATLANTA

Saturday, October 29	Arrival of International Students in Atlanta
Sunday, October 30 (9AM-1PM)	First Session of Negotiation Exercises Location: Emory Center for Ethics, 1531 Dickey Drive
Monday, October 31 (9AM-1PM)	Second Session of Negotiation Exercises Location: The Hatchery, 1578 Avenue Place #200
Monday, October 31 (2:30PM-4:30PM)	Center for Disease Control Visit 1600 Clifton Road, NE <i>Please arrive 15 minutes early to get through security.</i>
Tuesday, November 1 (8:30AM-6PM)	The ACTION DAY Location: Convocation Hall, 505 North Kilgo Circle, NE
Tuesday, November 1 (6:30PM-7:30PM)	Closing & Award Ceremony Location: Carlos Museum, 571 South Kilgo Circle, NE

ROLES

LEAD CHAIR

Gijs Boor	Leiden	h.i.g.boor@umail.leidenuniv.nl
Antoine Boudreau Leblanc	U. Montreal	antoine.boudreau.leblanc@umontreal.ca
Olajide Olugrade	Georgia Tech	oolugbade3@gatech.edu

JOURNALISTS

Victor Clavel	Nantes	victor.clavel@etu.univ-nantes.fr
Scarlette Shi	Georgia Tech	jshi372@gatech.edu
Hanifa Maswali	Spelman	hanifamaswali@spelman.edu
Gabrielle Veilleux-Verreault	U. Montreal	gabrielle.veilleux-verreault@umontreal.ca

NATIONAL DELEGATIONS

Luca Bindini (FRANCE)	Florence	luca.bindini@stud.unifi.it
Mati Brahim Sangore (QUEBEC)	Morehouse SOM	sbrahima@msm.edu
Stacy Carter (QUEBEC)	Morehouse SOM	scarter@msm.edu
Jurren De Groot (BRAZIL)	Leiden	j.g.de.groot.3@umail.leidenuniv.nl
Server Dede (FRANCE)	Emory GBS	server.dede@emory.edu
Rebekah M. Elting (MEXIQUE)	Emory SON	Rebekah.elting@emory.edu
Andy Jesus Espinoza (GERMANY)	Emory SON	andy.espinoza@emory.edu
Blaise Hartsoe (U. KINGDOM)	Emory MAB	blaise.charity.amelia.hartsoe@emory.edu
Lisa Klein (GERMANY)	Florence	lisa.klein@stud.unifi.it
Selena Lin (USA)	Georgia Tech	slin366@gatech.edu
Maxence Nicaise (U. KINGDOM)	Nantes	maxence.nicaise@etu.univ-nantes.fr
Hanga Papp (USA)	Semmelweis	papp.hanga@stud.semmelweis.hu
Charlotte Soule (BRAZIL)	Nantes	charlotte.soule@etu.univ-nantes.fr
Jonathan Webster (MEXIQUE)	Birmingham	jxw1439@student.bham.ac.uk

STAKEHOLDERS (NON-GOVERNMENT REPRESENTATIVES)

Emily Kim (SOCIAL)	Georgia Tech	emily.kim@gatech.edu
Krisztina Kornis (INDUSTRIAL)	Semmelweis	jshi372@gatech.edu
Ruben Krauspe (CIVIL)	Koln	kornis.krisztina@stud.semmelweis.hu
Divya Singh (INTERNATIONAL)	Birmingham	krauspe@wiso.uni-koeln.de
Garrett Williams (CHAIR)	Georgia Tech	dxs189@student.bham.ac.uk
Yuxuan Zhu (SCIENCE)	Leiden	rwilliams425@gatech.edu
		y.zhu.12@umail.leidenuniv.nl

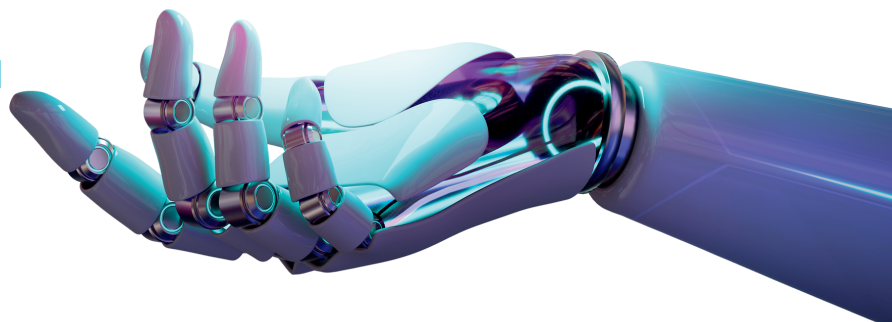
ACTION DAY SCHEDULE

- 8:30 AM **ARRIVAL-WELCOME**
Convocation Hall
- 9:00 AM **OPENING CEREMONY (ONLINE)**
Dr. Anne-Elisabeth Courrier, Assistant Professor in Public Law,
Nantes University, Visiting Fellow, Center for Ethics

Dr. Philip Wainwright, Vice Provost, Global Strategy and
Initiatives, Emory University

Madame Anne-Laure Desjonqueres, Consule Générale de
France, Atlanta

Dr. Paul Root Wolpe, Director of the Emory Center for Ethics,
Emory University
- 9:30 AM **PLENARY SESSION-OPENING SPEECHES (ONLINE)**
- 9:50 AM **PLENARY SESSION-COMMITTEE SESSION**
Committee Session/Stakeholders Session
- 10:45 AM **BREAK**
- 11:00 AM **STAKEHOLDERS PRESS CONFERENCE (ONLINE)**
- 11:30 AM **PLENARY SESSION**
- 12:30 PM **PRESS CONFERENCE (ONLINE)**
- 1:00 PM **LUNCH**
- 2:00 PM **COMMITTEE SESSION/STAKEHOLDERS MEETING**
- 3:15 PM **PLENARY SESSION**
- 3:30 PM **BREAK**
- 4:00 PM **PLENARY SESSION**



ACTION DAY SCHEDULE (CONT.)

4:45 PM **FINAL PRESS CONFERENCE (ONLINE)**

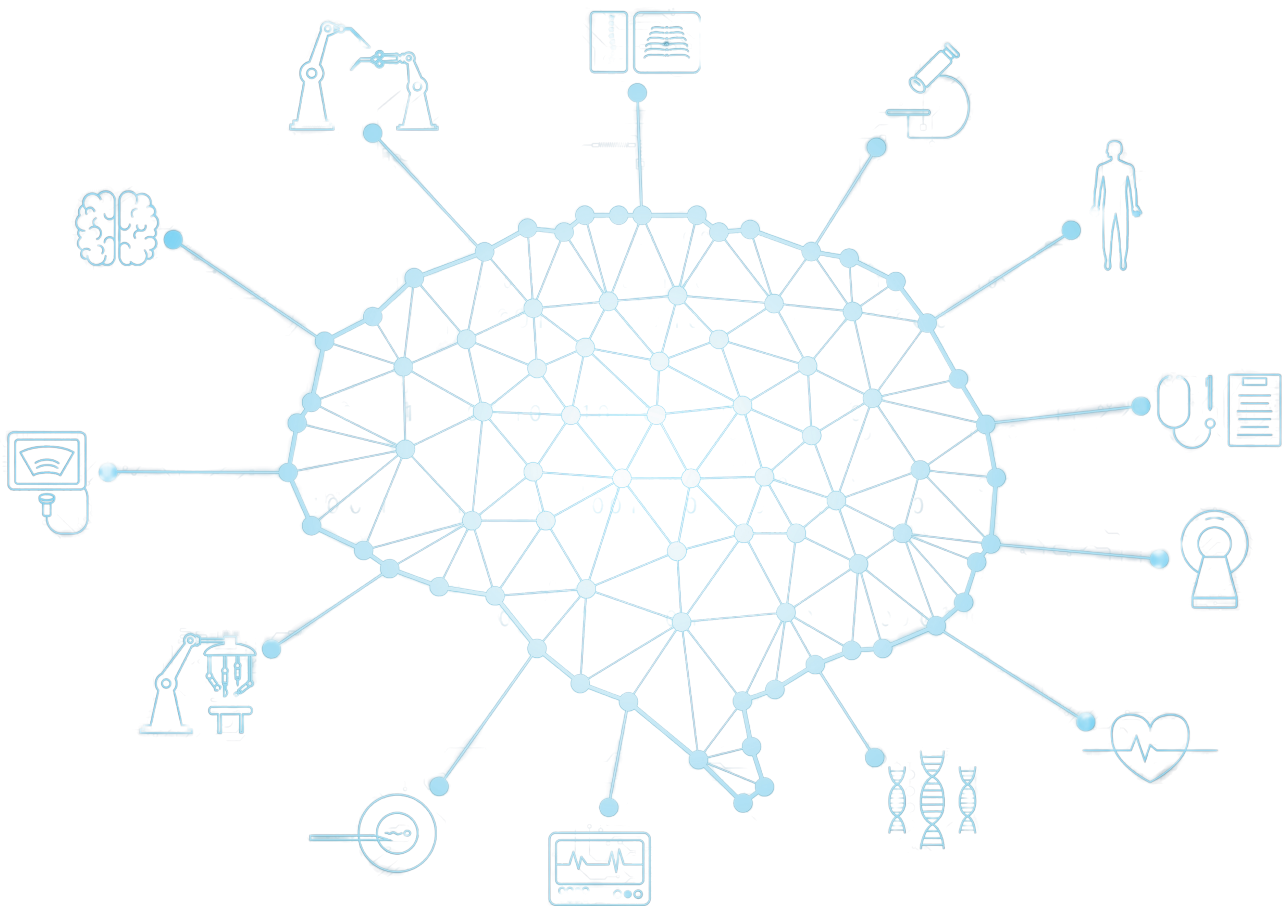
5:15 PM **FEEDBACK**

6:30 PM **COCKTAIL & AWARD CEREMONY**

Dr. Branden Grimmett, Vice-Provost for Career and Professional Development, Emory University

Mr. Stefano Folli, Head of Global Services and Solutions Delivery, Executive Vice-President, PHILIPS

Dr. Rami Abi-Akl, Attaché for Scientific Affairs at the Embassy of France in the USA, Atlanta



TWITTER

LEAD CHAIR

BRAZIL

CANADA - QUEBEC

FRANCE

GERMANY

MEXIQUE

U KINGDOM

USA

STKH - Industrial Representative

STKH - CIVIL SOCIETY Representative

STKH International Organization Representative

STKH - CHAIR STAKEHOLDER – Representative

STKH - SCIENCE Representative

JOURNALISTS

Organization

Simuvaction-AI-LEAD

@SimuvBRHAIM

Simuvaction_CA

@simuvaction_fr

@Simuvaction_GER

@Simuvaction_Mex

@simuUKeHealth

Simuvaction_US

@SimuSTKH_IndSci

@smvctn_humanity

Simuvaction 2022 - humAnlty

Simuvaction-AI-Chair

@SimuSTKH_IndSci

@simuvaction_INN

@simuvaction-AI

PARTNERS AND PARTICIPANTS

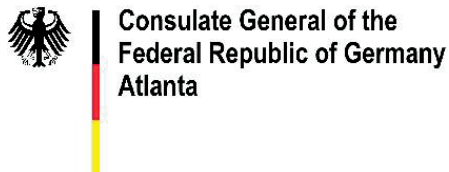


List of partners and participants

Embassy of France in the US, Service for Science and Technology
Emory University,
Georgia Institute of Technology
AGREC – the Atlanta Global Research and Education Collaborative (AGREC)
Spelman College
The Morehouse School of Medicine
The University of Montreal – School of Public Health
EUniWell
The University of Birmingham, United Kingdom
Leiden University, Netherlands,
Köln University, Germany,
The University of Florence, Italy
Semmelweis University, Hungary
Nantes Université
The International Observatory on the Societal Impacts of AI and Digital (OBVIA)
United Way Greater Atlanta
American Red Cross – Atlanta
American Cancer Society
Merlynn AI Technologies
Philips
The French-American Chamber of Commerce
French Ministerial Delegation for Digital Health (French Ministry of Health)
Consulate of Brazil in San Francisco
Consulate of Germany in Atlanta
Consulate of Mexico in Atlanta
Consulate of Quebec in Atlanta - Consulate of Canada in Atlanta
UNESCO



PARTNERS



MANY THANKS TO...

Asheville, NC, USA	COLTON Elizabeth	Warren Wilson College, UNITAR
Asheville, NC, USA	KEITH Mark	Merlynn-AI technologies
Atlanta GA, USA	ALLEVA, Diane F	Georgia Institute of Technology
Atlanta GA, USA	BORENSTEIN, Jason D	Georgia Institute of Technology
Atlanta GA, USA	KIPPELEN, Bernard	Georgia Institute of Technology
Atlanta GA, USA	McINTYRE John	Georgia Institute of Technology
Atlanta GA, USA	CLIFFORD, Gari D.	Emory University
Atlanta GA, USA	COLE Katie	Emory University
Atlanta GA, USA	GARRETT-BELL Jamila	Emory University
Atlanta GA, USA	HARRIS Jennifer	Emory University
Atlanta GA, USA	KEAR Alison	Emory University
Atlanta GA, USA	KONSYNSKI, Benn	Emory University
Atlanta GA, USA	LEBOWITZ Natasha	Emory University
Atlanta GA, USA	QUEEN II, Edward L	Emory University
Atlanta GA, USA	RUTHOTTO Lars	Emory University
Atlanta GA, USA	SONG Colin	Emory University
Atlanta GA, USA	TOTTEN Melody	Emory University
Atlanta GA, USA	VANN JONES Joseph	Emory University
Atlanta GA, USA	VONG Gerard	Emory University
Atlanta GA, USA	WEINSTEIN Sam	Emory University
Atlanta GA, USA	WOLPE, Paul Root	Emory University
Atlanta GA, USA	COURRIER Anne-Elisabeth	Emory University, Nantes University
Atlanta GA, USA	WALDRIP Shaia	Morehouse School of Medicine
Atlanta GA, USA	LAFOURCADE Alain	(private)
Atlanta GA, USA	LAFOURCADE Katherine	French-American Chamber of Commerce
Atlanta GA, USA	ZOUMANIGUI Adama	Salesforce
Atlanta GA, USA	BADOUR Terri	American Red Cross
Atlanta GA, USA	GUZMAN Pauline	City of Atlanta
Atlanta GA, USA	SANDERS Ellie	American Cancer Society
Atlanta GA, USA	LITTLE Milton	United Way Greater Atlanta
Atlanta GA, USA	BADOUR Terri	American Red Cross
Atlanta GA, USA	GARRETT Ben	Emory University
Birmingham, United Kingdom	BARTINGTON Suzanne	Université of Birmingham
Budapest, Hungary	LANTOS Zoltán	Semmelweis University
Florence, Italy	GRAZZINI Lisa	University of Studies of Florence
Florence, Italy	FRASCONI Paolo	University of Studies of Florence
Greenville, SC USA	COURRIER Pierre-Yves	Greenville Tech, BOSCH
Koln, Germany	WIESEN Daniel	University of Koln, Germany
Leiden, Netherlands	COURRIER Pierre-Etienne	Leiden University
Leiden, Netherlands	BONSANGUE, Marcello	Leiden, Netherlands
Leiden, Netherlands	BLANK Alexandra	Leiden, Netherlands
Montreal, CA	WILLIAMS-JONES Bryn	University of Montreal, School of Public Health
Nantes, France	COVAIN Anne-Claire	Nantes University
Nantes, France	LEGRESSUS Yannick	Nantes University
Nantes, France	IVORRA Cecile	Nantes University
Nantes, France	BOUTET Maxence	Nantes University
Nantes, France	VERON Paul	Nantes University
Nantes, France	SANCHEZ Samuel	Nantes University
Paris, France	PERCHOC philippe	Paris , European Parliament, Research Service, Maison Jean Monnet
Paris, France	STÜWE Louisa	French Delegation for Digital health, Ministry of Health, FR
Paris, France	FAURE Matthieu	French Delegation for Digital health, Ministry of Health, FR